



## Digital Workflow with KIG

Powered by MPRO5

### Enhance the efficiency of your workplace

#### Transform your workforce with the best digital transformation technology: MPRO5

By introducing a modern digital workflow platform, MPRO5 can capture and monitor proof of work, electronic signatures, time and attendance and more. All managed from a mobile device and synced back to a hosted azure environment. MPRO5 can make managing large workforces effortless in a platform where performance can be analysed using big data.

#### Evade Challenges in today's current work environment

Businesses are constantly looking for solutions to increase productivity and streamline processes. Standardising and streamlining your business with MPRO5 will reduce the risk of rogue spending and unnecessary overheads.

#### Common areas of difficulty:

- Inefficient reporting in real-time across the business
- Increased risk of H&S claims due to missing paperwork
- Increased costs from duplication of data and data entry across the business
- Increased costs from managing and maintaining multiple point solutions
- Increased costs from contractors due to lack of visibility and accountability of work
- Lost time and money from inefficient time and attendance processes

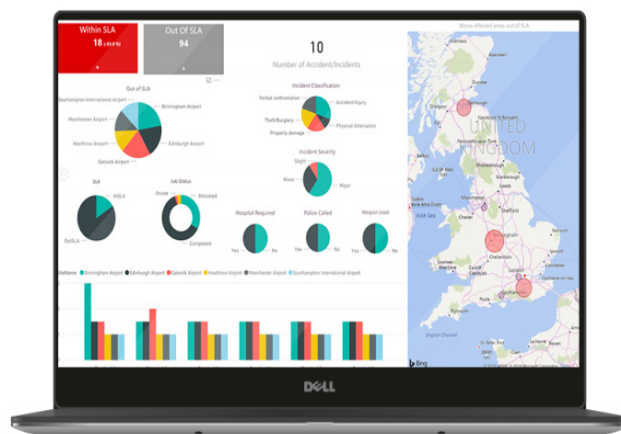
MPRO5 is a mobile workforce management platform that uses a Software-as-a-Service model and harnesses the power of Microsoft Azure.

The platform consists of a mobile app configured to your requirements, a management portal, reporting, alerting and customised dashboards. MPRO5 is a full-service solution on a monthly subscription which allows scalable, flexible and sustainable digital transformation journeys for businesses regardless of their size.

#### How does it work?

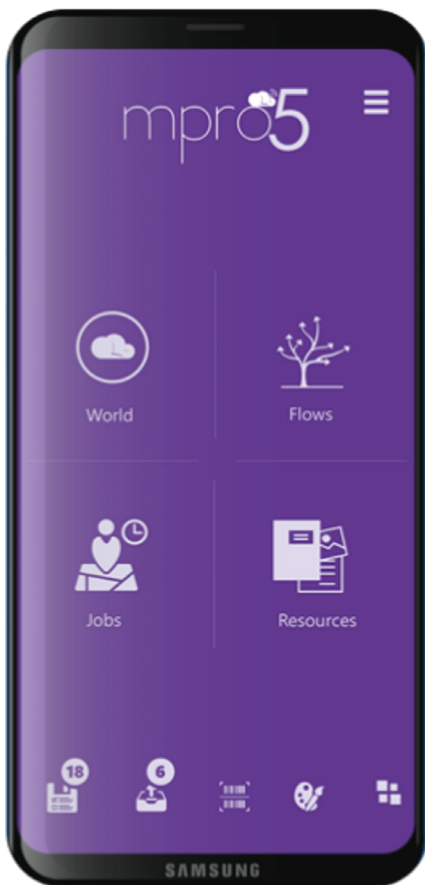
As a highly configurable platform, MPRO5 provides automation for all of the below and much more.

- Dynamic Workflow
- Alerting
- Scheduling & Job Sheets
- Time & Attendance
- Vehicle Checks
- Auditing & Compliance
- Reporting & Dashboards
- Proof of Presence
- Proof of Work
- Integration
- Quoting & Invoicing
- Internet of Things
- Offline Working
- Help & Support
- Data Security



## MPRO5 on your employee mobile

A Full-service solution which is contracted on a monthly subscription with a support team in place for if things do not go to plan.



ORGANISE YOUR BUILDINGS



DIGITALISE YOUR PAPERWORK



LOG YOUR ASSETS



CO-ORDINATE YOUR ENGINEERS



TRACK YOUR SLA'S



AUTOMATE YOUR REPORTS

### Tailored to you

The MPRO5 portal is your management area, accessed via the web, everything from creating job schedules to viewing maps and graphs. You'll be able to see your mobile workforce in real time as well as being able to view all your data and will have access to settings, reports and more. All configuration is included in the service.

### Automate your reporting

Putting together manual reports is extremely time-consuming and tedious, so let the MPRO5 mobile workforce management software do all the work for you. MPRO5 is able to instantly generate and distribute digital reports. Reports can display photos, maps, signatures and answers.

### Intelligent maps and graphs

Maps & Graphs draw value from mobile workforce management software by presenting your data in an interactive and visual way. With no fixed way of displaying graphs, you can choose the information that is useful to you.

### Time & Attendance

MPRO5 with Time & Attendance enables your mobile workforce to prove attendance at a specific location, whilst monitoring the time they have spent there. With MPRO5 and Time & Attendance, handling shifts is easy and we'll help you manage all of this within the MPRO5 portal, including shift and holiday cover.

### Internet of things (IoT)

Internet of Things (IoT) takes mobile workforce management software to the next level by enabling you to schedule reactive jobs as a result of IoT Sensor readings. Rules in IoT enable you to set up conditions against your IoT sensors, so when those conditions are met a job will be reactively scheduled.



# Using MPRO5



## AUTOMATIC REPORTS

MPRO5 instantly generates, sends and files reports in the right place

Capture digital signatures, include photo evidence and ability to log location and time



## ALERTING

MPRO5 alerts people (email, push notification)

When something is not right with an asset, a job is scheduled. Alerting can be set when no one has arrived or if a job is nearing SLA.



## FOLLOW-UP ACTIONS

MPRO5 triggers remedial actions from JOBS, these can start a new FLOW for someone else.

Alert someone to ensure procedural compliance is met. Complete, track, trace, sort, send and REPORT on the action status.



## DASHBOARDING

MPRO5 comes with a suite of effective reports as well as easy to manage dashboards.

Our experts can also produce interactive dashboards to your requirements.

## Why use MPRO5?

**Configurable** – MPRO5 is completely customisable and there are no development costs for processes to be created or changed. Your monthly subscription is all you pay for.

**Industry Agnostic** - Due to the configuration of the platform, MPRO5 is not designed for just one purpose, it is used across many disciplines for a variety of different workflow matters.

**Fast** – MPRO5 lets you set up, deploy and integrate the platform quickly and easily. Customers are up and running in 30 days.

**Trusted** – MPRO5 is used in over 260,000 sites by a range of businesses, from The Metro, Morrisons, Compass Group and more.

MPRO5 supplied by KIG is an established and proven platform to help transform your business into a productive workforce, implementing a digital workflow can ultimately lead to an increase in profitability for your business.

MPRO5 allows you more visibility of work completed in the field or onsite while saving on the important resources of time and money.

## Learn how we can help

If you would like to learn more about how MPRO5 can transform your business into a digitized workplace, book a demo with KIG now and find out more information.

### Contact

Knight IT Group Ltd  
www.k-i-g.com/digitalworkflow  
Matt Clark  
Account Director  
matt.clark@k-i-g.com  
02038573800

